

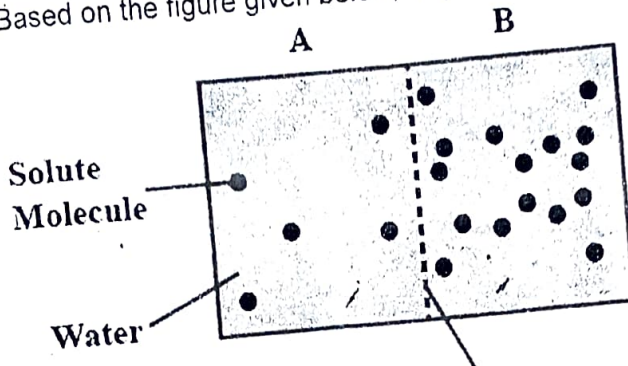
CARMEL CONVENT SCHOOL, CHANDIGARH  
 UNIT TEST-1 MAY 2025  
 CLASS IX  
 SCIENCE

Time: 40 min

MM: 20

Biology (6)

1. Based on the figure given below, which is an incorrect statement?



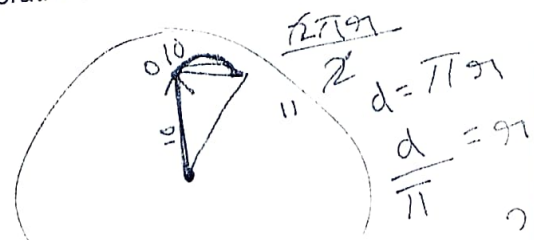
Solute - ↓ →  
 WATER - ↑ ↓

- a. Water molecules will move from A to B  
 b. Water-molecules will move from B to A  
 c. Presence of selectively permeable membrane is important for this process  
 d. The above process is Osmosis (1)
2. Name  
 a. A branched cell in human body (2)  
 b. A cell organelle present even in Prokaryotes (3)
3. Draw a neat and well labelled diagram of an Animal Cell.

PHYSICS (7)

1. A Train is running a constant speed of 54 kmh<sup>-1</sup>. What is its speed in ms<sup>-1</sup>? (1)
2. What is numerical ratio of average velocity to average speed of an object when it is moving along a straight path? (1)
3. The minute hand of a wall clock is 10 cm long. Find its displacement and the distance covered from 10 a.m. to 10:30 a.m.? (2)
4. a) When do you say that a body is moving with uniform acceleration.  
 b) A train starting from a railway station and moving with uniform acceleration attains a speed of 40 kmh<sup>-1</sup> in 5 minutes. Find its acceleration. (3)

↓  
 $\frac{100}{9}$



CHEMISTRY (7)

- 1 Convert 273 k into degree Celsius.  $0^{\circ}\text{C}$  (1)
- 2 In which physical state water exists at a)  $100^{\circ}\text{C}$  b)  $0^{\circ}\text{C}$  (1)
- 3 a) Define melting point of a solid.  $\downarrow$   $\downarrow$   
gas gas (1)
- b) What does melting point of solid indicate? ~~\_\_\_\_\_~~ (1)
- 4 a) Give the graphical representation of the temperature and time when a student heats a mixture of ice and water in a beaker. (1)
- b) State one difference between gas and vapour with e.g. (3)

END

